

EDUCATION IN THE CITY

A snapshot of Auckland's Education Landscape 2011

Central government invests \$4 billion
annually on education in Auckland.
Are we getting the best value for money ?

COMET



WORKING TOGETHER FOR EDUCATION

AUCKLAND'S EDUCATION LANDSCAPE

1. ONE CITY, MANY PEOPLE

Education matters to Auckland Council because it underpins economic development and social wellbeing. Education has to work for everyone if the city is to prosper.

1.4

Million Aucklanders.
190 ethnic groups live in Auckland – one of the few 'super diverse' cities in the world.¹

37%

of Aucklanders were born overseas; more than half have lived here less than a decade.²

25%

of all Māori in New Zealand and 67% of all Pasifika live here.

37%

of Pasifika Aucklanders live in Mangere-Otahuhu and Otara-Papatoetoe.

It's a young city. The median age of Māori and Pasifika is 21 compared to 36 for other ethnicities.

There are 64,662 families with children aged under 20.

35%

are sole parent families.³ Approximately 290,000 children aged 0-14 live here now; there may be another 65,000 children here in 2030.⁴

2. OUR LANGUAGE RICHNESS

26,400

Māori in Auckland who can converse in Te Reo Māori.⁵

65%

of non-English speaking New Zealanders live here.

27,000

Aucklanders speak three or more languages - a resource for the city.

Samoan is the most commonly spoken language after English.

3,016

Pasifika children in 83 Pasifika ECE centres, about half in immersion programmes.

3. EDUCATION FOR MĀORI

35,000

Māori students in mainstream schools.

1,800

taura in Māori immersion schooling.

1,289

tamariki in 57 Te Kōhanga Reo and 7,891 in bilingual pre-schools.

11

Te Kura Kaupapa Māori schools.⁶

4. EARLY LEARNING MATTERS

94,077

children aged 0-4.⁷

35,811

children aged 3+years enrolled in ECE.⁸

Lowest participation rates are in Mangere, Papatoetoe, Manurewa, Otara and Tamaki-Maungakiekie.⁹

98% European/Pakeha children attend ECE compared with 89% Māori and 85% Pasifika.

Despite investment and 20 hours free provision there is still a gap between demand and available places.

5. NEW ENTRANTS

Over 18,000

5 year olds start school each year.

Children starting in Decile 1-4 schools are less likely to have been to ECE before school.

6. AUCKLAND'S NETWORK OF SCHOOLS

Auckland has unusually high numbers of low and high decile schools. Complex urban schools have developed to meet the needs of our diverse communities e.g. multiple schools and boards on one site.

542

schools.

262,635

students.¹¹

23,000

school students receive English language support.¹²

118 low decile schools

84%

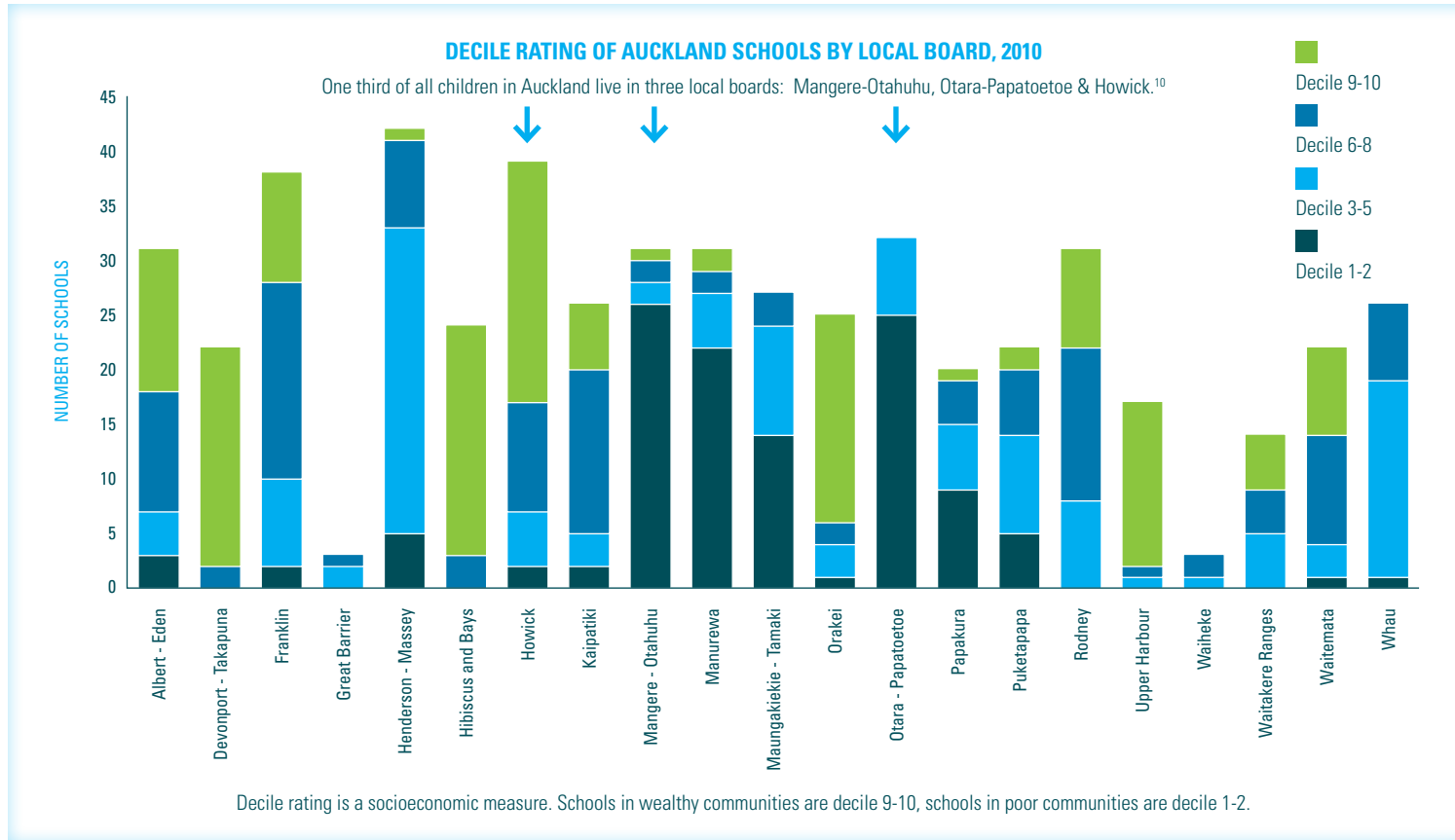
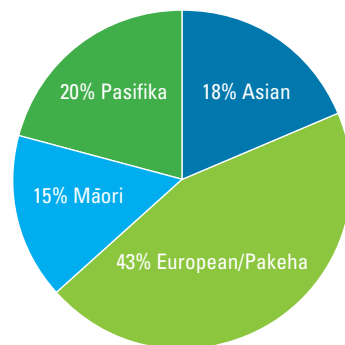
of schools in Mangere-Otahuhu are Decile 1 & 2.

155 high decile schools

91%

of schools in Devonport-Takapuna are Decile 9 & 10.

ETHNICITY OF AUCKLAND SCHOOL STUDENTS 2010



9. INNOVATIVE PATHWAYS

951

Youth Guarantee places - free tertiary study for 16-17 year old school leavers.

410

places in Academies where students get vocational experience and qualifications while at school.

2,070 intensive youth transition places to help young people enter or stay in education or training.

3,252

Gateway places for senior students to gain experience and skills for work while at school.

Year on year, the number of alternative places and pathways is not keeping up with need.

10. SKILLS, SKILLS, SKILLS

708,100

in the Auckland workforce.

20% of Aucklanders have a tertiary qualification.¹⁸ Aucklanders born overseas are twice as likely to have a post-graduate qualification.

478,900

adult Aucklanders with low numeracy and 410,000 with low literacy.

65%

of adults in Counties Manukau and 59% of adults in Waitakere have low numeracy.

More facts

7,468 Te Wānanga O Aotearoa taura.

10,463 places for adult community education through schools (16 hours).

3,179 Modern Apprentices; apprenticeships have declined during the recession.

3,800

school trustees.

31,000

industry trainees.

48 schools upgraded to ultra-fast broadband in 2010.

7,287 trainees in Training Opportunities and Youth Training.

8,788 students achieved higher than NCEA Level 3.

183,972 adults without qualifications.

1,676 children home-schooled.

11

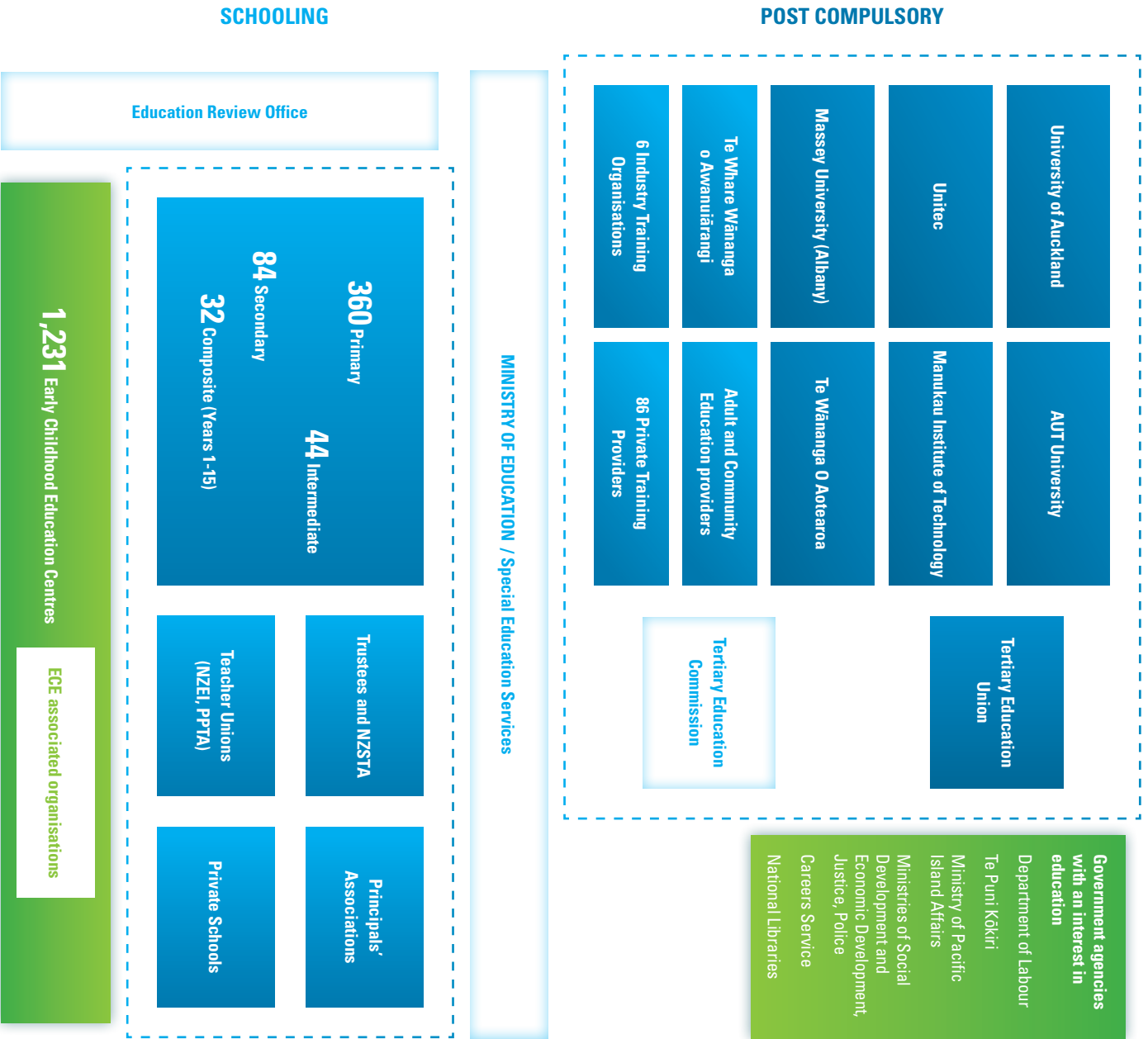
schools with more than 2,000 students, 17 with fewer than 30 students.

2 new schools open in 2011, 3 more by 2013.

References

1. Similar diversity to Vancouver, more diverse than Sydney.
2. 10. Population characteristics of Auckland regional local board areas - an overview (2010), Auckland Regional Council
3. 7. 18. NZ Census, 2006
4. Projected Resident Population 2011-2031, Auckland Regional Council
5. Māori Language Commission
6. 12. 13. 21. Central Government Social Sector Agency Briefings, October 2010 for Auckland Council
8. Education Counts. Percentage and number of Year 1 students who attended early childhood education services, 2010
9. Ministry of Education Annual ECE Summary report, 2010
11. Education Counts, October 2010 rolls
14. Department of Labour Annual In-depth Regional Report, 2008
15. Tertiary Education Commission 2010 Regional Briefing
16. Ministry of Education data on National Assisted Places, Transition Year 9-9 Auckland
17. Johnson, A (2002). A study of student transience in South Auckland primary schools. Auckland: Child Poverty Action Group
19. NZ Income Survey, Statistics NZ, July 2009
20. Sutton A, Vester B. Unlocking Auckland's potential: adult literacy and numeracy skills in the new Auckland (2010) COMET

AUCKLAND'S EDUCATION INFRASTRUCTURE



Private Service Providers (professional development, consultancy, etc.)

Not-for-Profit Community (special programme or service) providers - eg. Cognition, Auckland Regional Migrant Service, English language partners, Literacy Aotearoa, youth mentoring, health services, youth services, social services, School Business programmes

Education New Zealand - International Education (Export)

Business and community organisations interested in educational outcome

- Council of Trade Unions
- Employers and Manufacturers Association
- Chamber of Commerce
- Iwi
- Philanthropic Community

Auckland Council's Contribution to Learning in the City

- Libraries, Museums, Galleries, Theatres**
Holiday and after school programmes
Family learning programmes
Leisure services, sport and recreation
- Transport**
Walking buses, Travelwise
- Planning & Environment**
Spatial planning for education infrastructure
Licensing for early childhood education centres
Enviroschools
- Economic Development**
Export education
Business training and development
Skills forecasting
Learning precincts
- Community Development**
Youth programmes
COMET
Learning and Social Policy
Health and wellbeing